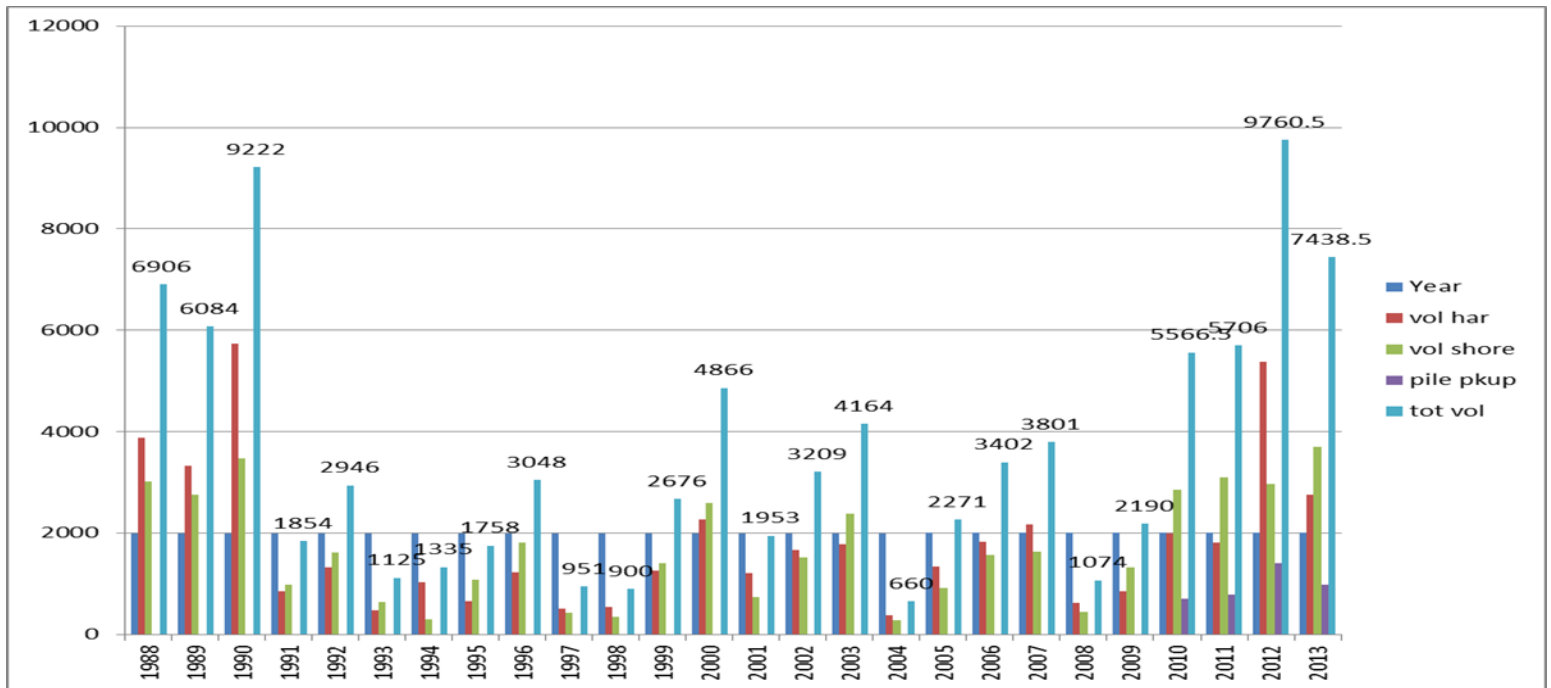


HAPPY HOLIDAYS AND A PROSPEROUS AND HEALTHY NEW YEAR TO ALL!

LAKE CLEAN UP SUMMARY

It was another heavy year with the aquatic plants on the lake. Clean-up crews worked through October cutting, picking up shorelines and doing pile pick up. We have included a chart that shows the volume of aquatic plants taken out of the lake over the years and how these last few years compare to the previous high growth cycles.

The total volume of aquatic plants removed from the lake equates to 7,438.50 cubic yards. Below is a graph of the volumes of aquatic plant removal over the past 25 years. The tallest spikes are the combined volumes of all the methods of the districts removal operations (the harvesters, shore barges and pile pick up). As you can see 2013 was another heavy year for aquatic plant growth.



Aquatic Plant Harvesting Chart 1

The 2013 Pewaukee Lake weed harvest and removal season concluded with the harvesting of 306.5 harvester loads, the shore removal of 616.5 loads, and the Monday and Friday pile pick-up of 118.5 transport loads, all primarily of Eurasian Milfoil. We removed a total of 240 dump truck loads and 23 trailer loads. Additionally, in a cooperative effort with the Village of Pewaukee, we dumped 23 transporter loads at the Village facilities during our lake wide pile pick-up. According to LPSD records thru 1988, and excluding the extraordinary weed year of 2012, this is the highest number of harvester and dump truck loads since 1990. This is the highest amount of shore removal to date.

This season saw a significant infestation of filamentous algae around the perimeter of the western basin that fortunately diminished as the summer progressed. The eastern basin saw a lessened weed mat in the Kopmeier and Parkside shorefront areas that was offset by a substantial mat off of Peterson and Woodland. To accommodate boat traffic, a channel was cut from the Peterson buoy line towards Bauer’s Island buoy line.

The majority of floating weeds this year were removed from the shores of Kopmeier, Parkside (which for our purposes includes Hillside Grove), Taylors Woods (which for our purposes extends from Taylors Bay to “sandy point”), Woodland, and Peterson. Harvesting was done most heavily in Peterson, Woodland, Kopmeier, Starky Bay, and Buena Vista.

Below is a summary of loads removed and full, or partial, days spent in specific areas. It's important to note that equipment may begin on a shore line and weather, wind, or completion of the assignment will cause movement to another location, yet still appear as a "day". Approximately 25 harvester loads from the channel cut off of Peterson is reflected in the Peterson total.

Location:	Harvest Loads:	Harvest Days:	Shore Loads:	Shore Days
Edgewood/Rocky Pt.	14.75	5	22.125	13
Starky Bay	29	11	42	17
Peninsula	7.5	8	13.5	7
Woodland	42.5	13	59	26
Peterson	50.5	12	46.5	18
Kopmeier	36.75	13	108.25	33
Parkside	8.75	6	105	33
Taylor's Woods	10.75	6	68.25	24
North Shore	20.5	12	32	15
Buena Vista	23.5	8	35	14
Glen Cove	17	11	12.5	8
South Shore	12.25	10	5.25	4
Auer Park	18.5	8	32.25	21
Beach Park	3.75	4	5.75	7
Yacht Club	10.5	3	8.75	10

SEWER PUMPS – they do not like cleaning rags

This time of year we can have sewer pump clogging issues typically due to cleaning up homes and throwing the rags into the toilet. Don't just guess that the rags are toilet friendly. All rags and disposable towels cause seem to cause problems; none of them are pump friendly. Toilet paper is toilet and pump friendly. Help us keep the District fee down, tell your cleaners to take their rags with them or dispose of them properly in a garbage can.

USER FEE IS UP

The new rate for our quarterly sewer user fee will be \$100.00 starting with the April 1st billing. The user fee covers the operations and maintenance of the sewer. The costs to the district are always rising, due to gas and oil prices and increased maintenance of our aging system. However, even with a small rate increase, the District still has one of the lowest rates in the area.

EDUCATIONAL PROGRAM

The District is offering educational programs over the winter months. The first program will be in February called - **A HISTORY OF PEWAUKEE LAKE**. Charlie Shong will give us the pleasure of hearing how it all started with the ice age and what makes are lake unique and how this history affects our present day management. Typically these will occur on a Wednesday evening at 7:00 p.m., watch the local newspapers for the exact date and time and other topics.

EMPLOYMENT– Summer Lake Crews

Lake Pewaukee Sanitary District will be looking to hire enthusiastic people to help with the lake operations this next year. The temporary summer employees work from early May until the end of August. The shift starts at 7:00 a.m. and ends at 3:30 p.m. with opportunities for overtime depending on lake conditions. Applications for the seasonal help will be accepted for review starting any time after January 1st, 2014. Applicants must be at least 18 years of age.

We also are considering applications for the lake supervisor position which will also share on call duties in the sanitary sewer operations. Mechanical abilities are required for this position. Call Rita at (262) 691-4485 for more information.